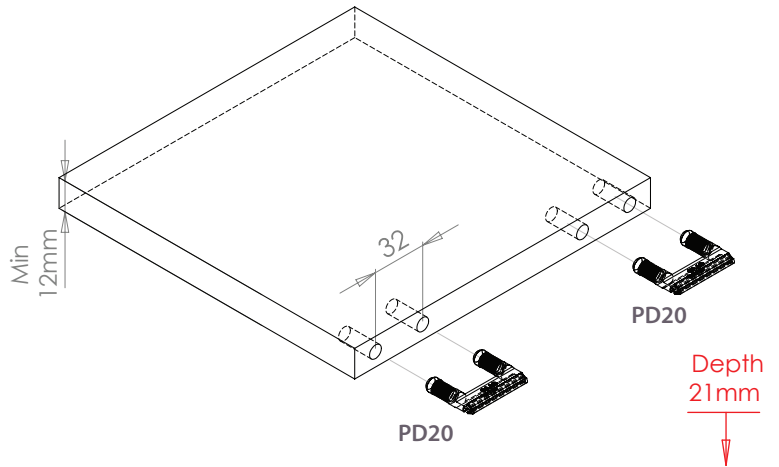
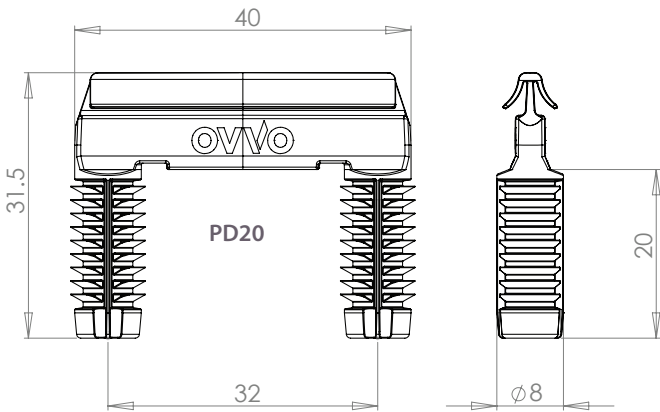


INSTRUCTIONS

PD20 + V1230PH

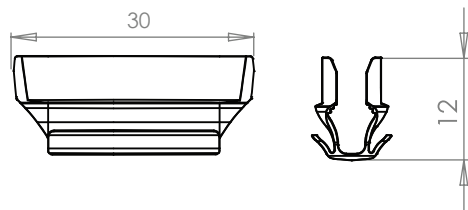


1. Drilling for V-1230PD-20

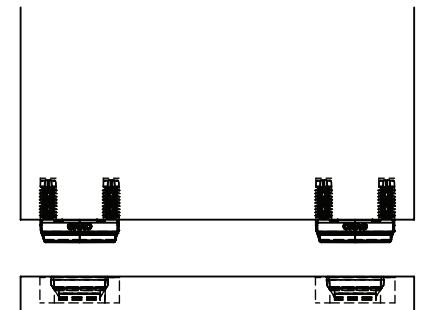
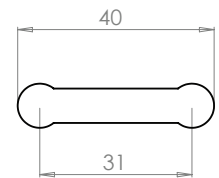
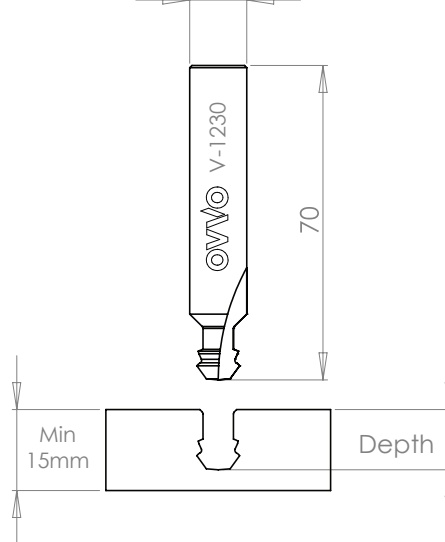


Depth 21mm
 ↓
 Ø7.8mm for MFC particle board
 Ø 8mm for other board types

2. Milling for V-1230PH



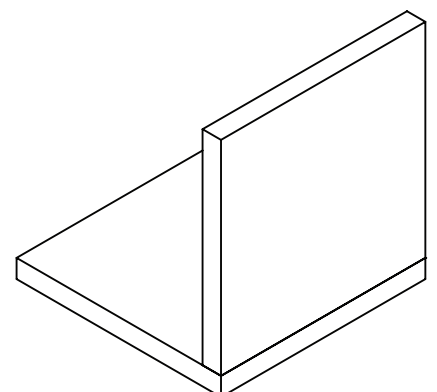
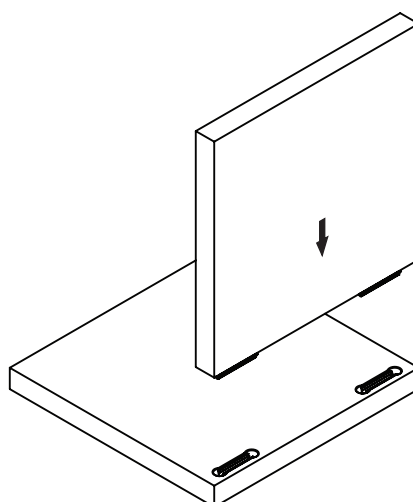
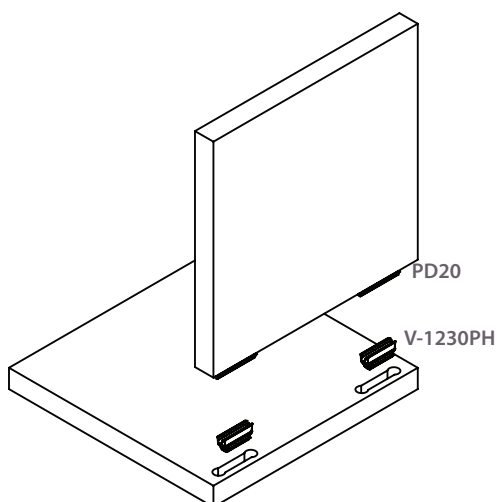
Available in
 Ø12.7 / 12

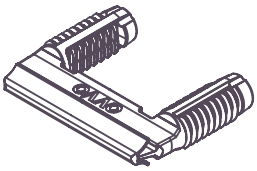


Recommended Settings

Plunge Depth: 13.2mm +/- 0.5mm
 Feed speeds vary with different materials.

3. Assembly



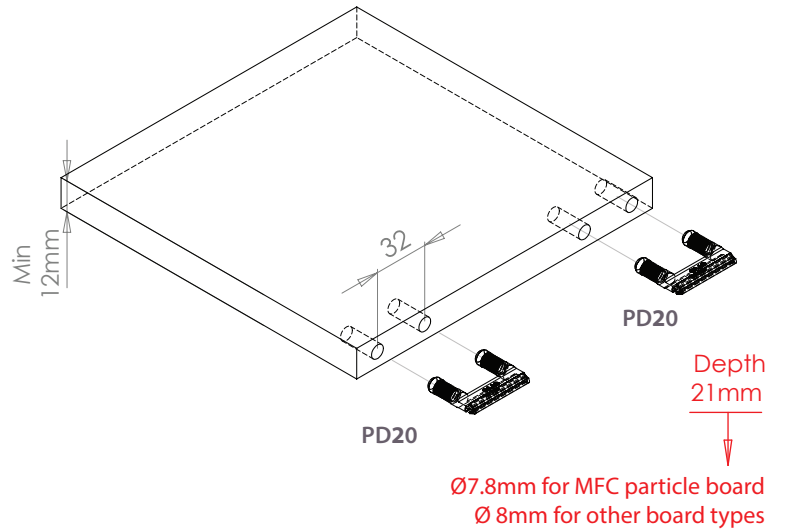
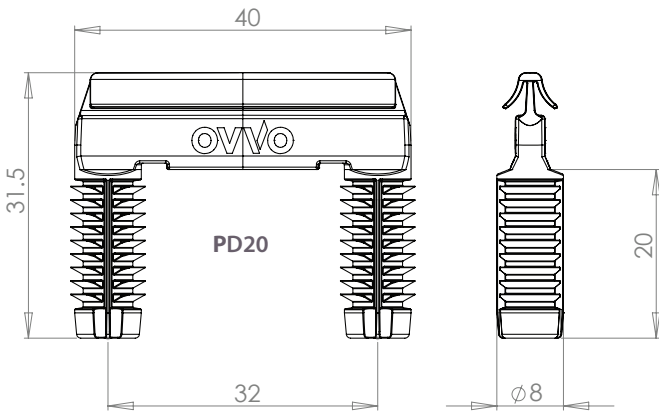


INSTRUCTIONS

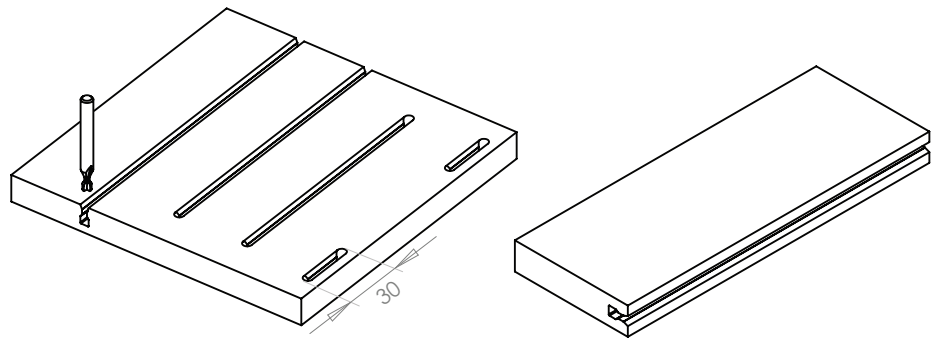
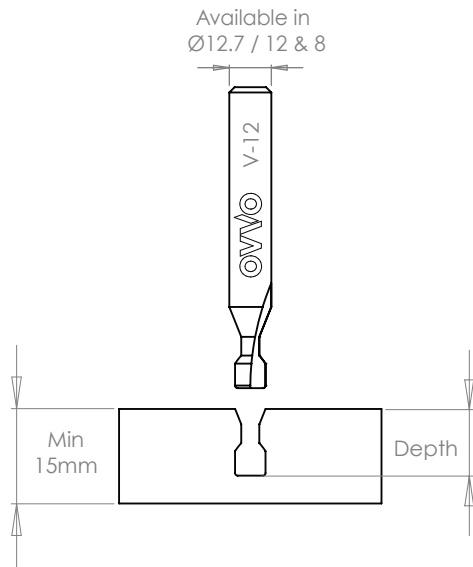
PD20



1. Drilling for PD20



2. Milling Examples



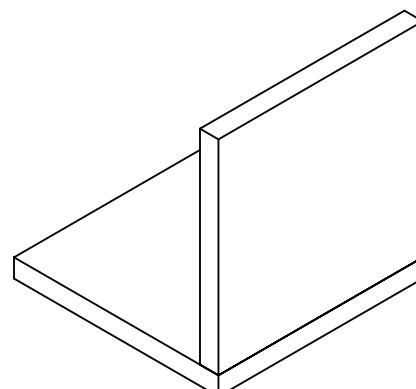
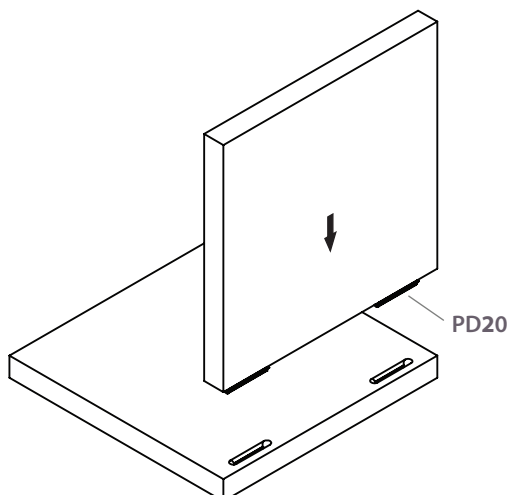
Recommended Settings

Plunge Depth: 12mm +/- 0.3mm

Feed speeds vary with different materials

Tip: Plunge, Travel, Back Travel to clear excess milling dust

3. Assembly



Can be used with glue